



DIFFERENTLY ABLED

**GOVERNMENT COLLEGE JAITHARI,
DISTRICT- ANUPPUR (M.P.) INDIA**

POLICY

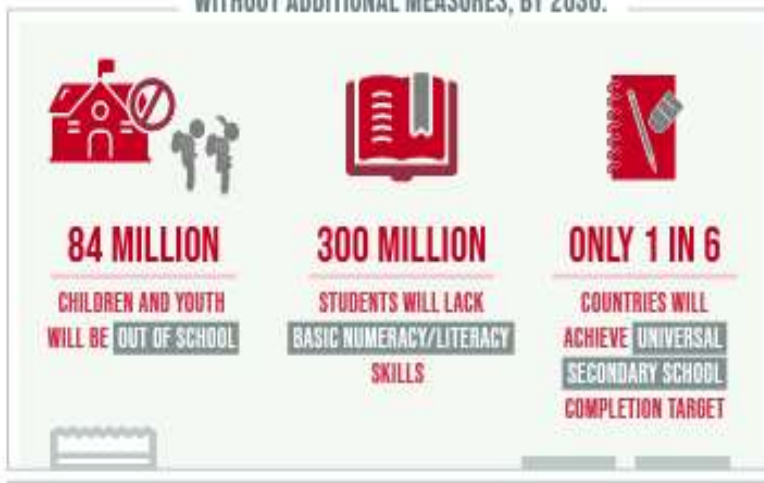


ENSURE INCLUSIVE AND EQUITABLE QUALITY EDUCATION AND PROMOTE LIFELONG LEARNING OPPORTUNITIES FOR ALL

DESPITE SLOW PROGRESS,

THE WORLD IS FALLING FAR BEHIND IN ACHIEVING QUALITY EDUCATION

WITHOUT ADDITIONAL MEASURES, BY 2030:

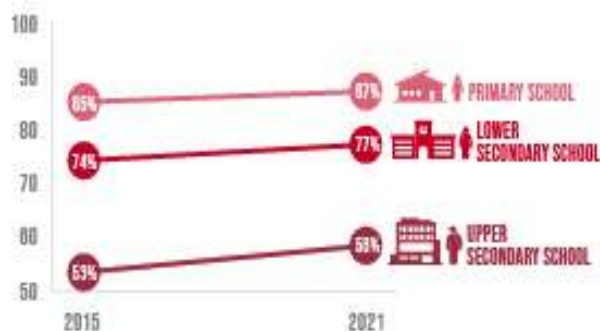


THE PANDEMIC

CAUSED LEARNING LOSSES IN **4 IN 5** OF 104 COUNTRIES STUDIED

PRIMARY AND SECONDARY SCHOOL COMPLETION RATES ARE **RIISING**, BUT THE PACE IS SLOW AND UNEVEN

COMPLETION RATES



LOW- AND LOWER-MIDDLE-INCOME COUNTRIES FACE A NEARLY

\$100 BILLION

ANNUAL FINANCING GAP

TO REACH THEIR EDUCATION TARGETS



Mr. Ashok Kumar Rathour

Adhyaksh

Janbhagidari Samiti Govt. College Jaithari, Anuppur (M.P.)

Forward



Dear Esteemed Members of Government College Jaithari,

As the Adhyaksh of the Janbhagidari Samiti of Government College Jaithari, District Anuppur, Madhya Pradesh, it gives me immense pleasure to present this foreword to our comprehensive College Policy. Since our institution's establishment in 2012, we have been on a journey of growth, learning, and community engagement. This policy document marks another significant milestone in our college's development.

The Janbhagidari Samiti, or Public Participation Committee, plays a crucial role in bridging the gap between the college and the community. Our committee's vision aligns perfectly with the college's mission to provide quality education while fostering a sense of social responsibility among our students.

This College Policy is a testament to our collective efforts to create an institution that not only excels in academics but also prepares students to be responsible citizens. It encompasses various aspects of college life, from academic standards to community outreach programs, reflecting our commitment to holistic education.

I urge all stakeholders - students, faculty, staff, and community members - to embrace this policy wholeheartedly. It is through your active participation and adherence to these guidelines that we can truly realize the potential of our institution.

As we move forward, let us remember that the strength of our college lies in the spirit of 'Janbhagidari' - public participation. This policy is not just a document, but a shared vision for our college's future. Together, we can build an educational institution that serves as a beacon of knowledge and social progress in our region.

I look forward to your continued support and cooperation in implementing this policy and in furthering the growth of Government College Jaithari.

Sincerely,

**Mr. Ashok Kumar Rathour
Adhyaksh- Janbhagidari Samiti
Govt. College Jaithari
District Anuppur, (M.P.)**



Dr. Ramesh Singh Wate

Principal

Govt. College Jaithari, Anuppur (M.P.)

Forward



Dear Students, Faculty, and Staff,

As the Principal of Government College Jaithari, District Anuppur, Madhya Pradesh, it is my privilege to present our comprehensive College Policy. This document serves as a cornerstone for our institution, outlining our vision, mission, and the guiding principles that shape our academic environment.

Our college policy is designed to foster an atmosphere of academic excellence, personal growth, and social responsibility. It reflects our commitment to providing quality education while nurturing the diverse talents of our students. The policy encompasses various aspects of college life, including academic standards, code of conduct, extracurricular activities, and community engagement.

I encourage all members of our college community to familiarize themselves with this policy. It is not merely a set of rules, but a roadmap for our collective success. By adhering to these guidelines, we create a harmonious and productive learning environment that benefits everyone.

As we move forward, let us embrace these policies with enthusiasm and dedication. Together, we can build a college that not only imparts knowledge but also shapes responsible citizens who will contribute positively to society.

I look forward to working with all of you in upholding the high standards set forth in this policy and in continually striving for excellence in all our endeavors.

Sincerely,

Dr. Ramesh Singh Wate
Principal
Govt. College Jaithari
District-Anuppur (M.P.)

Govt. College Jaithari, Anuppur M.P.

Department of Higher Education M.P.

Differently Abled Policy

Preamble:

Recognizing the spirit and mandate of The Rights of Persons with Disabilities Act, 2016, Govt. College Jaithari, Anuppur commits to ensure equal opportunities, protection of rights, and full participation of individuals with disabilities.

Policy Objectives:

To eliminate discrimination on the basis of disability and to promote an inclusive and accessible learning environment.

To provide equal opportunity for persons with disabilities for pursuing higher education.

To facilitate comprehensive accessibility through infrastructural modifications, reasonable accommodations, and support services.

Policy Measures:

1. Accessibility:

We will ensure that all our facilities, including classrooms, laboratories, libraries, hostels, and other campus amenities, are accessible to all students, including those with mobility issues.

2. Admission:

In the admission process, preference shall be given as per the rules and regulations set forth by the Central/State government.

3. Academic Support:

Differently-abled students will be provided with reasonable accommodations such as additional time for examinations, provision of support staff, and curriculum adaptations wherever necessary.

4. Scholarships and Financial Support:

We will facilitate scholarships and other financial support mechanisms for students with disabilities as per state and central government schemes.

5. Counseling and Career Guidance:

Dedicated counseling services will be made available for differently-abled students to help with their academic, personal, and career-related concerns.

6. Training and Sensitization:

Regular sensitization and awareness programs will be conducted for faculty, staff, and students to foster an inclusive college community.

7. Grievance Redressal:

A grievance redressal mechanism will be set up specifically for issues related to disability discrimination

Implementation and Review:

This policy will be reviewed and updated on a regular basis to accommodate changes in legislation and to reflect our ongoing commitment to creating an inclusive learning environment.

Drafted by:- Dr. Ramesh Singh Wate

Verified by:- Dr. Ramesh Singh Wate

**Coordinator IQAC
Govt. College Jaithari**

**Principal
Govt. College Jaithari
Anuppur (M.P.) 484330**